



Verify Command

(Numeric, Character, and Date Fields)

Used For

- To check for data validity errors in a table, especially in numeric and date fields.
- To ensure that data in a table conforms to the table layout.

When Used

Should be used for every table when the table is first established.

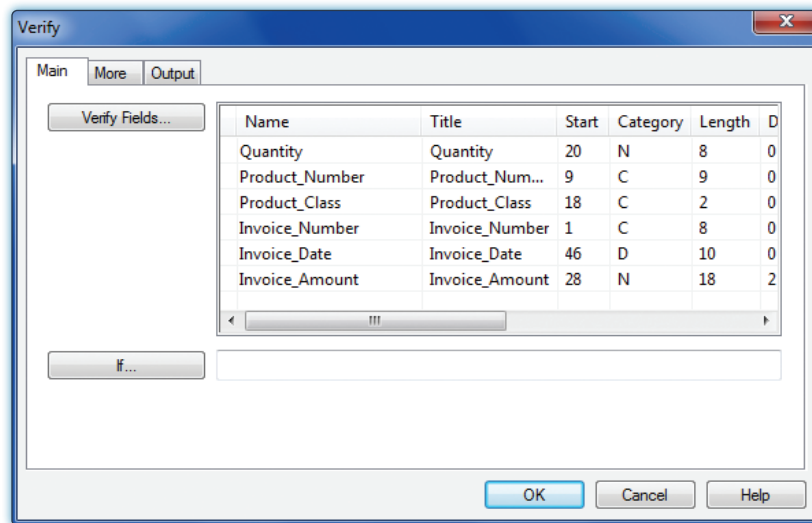
Example

An auditor uses the Verify command after creating a sales invoice table from a client's data file. The Verify command isolates numeric, character, and date fields that are corrupted, such as an alphabet letter in a numeric field or a date such as March 32.

Steps

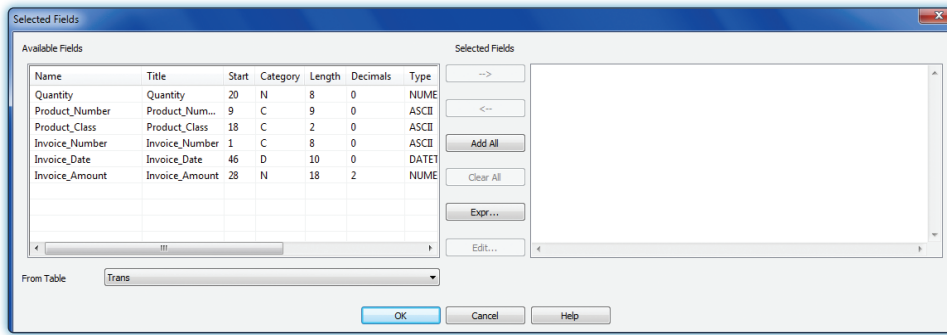





Click **Data** → **Verify** to open the Verify command dialog.



Click the **Verify Fields** button to open the Selected Fields window.

VERIFY COMMAND



-  Click the Add All button.
-  Click OK.
-  Click OK in the Verify command dialog.

Command Results

The command results show any records with invalid field data. Following is an illustration of Verify command results.

As of: 02/16/2017 14:37:27
Command: VERIFY FIELDS Quantity Product Number Product Class Invoice Number Invoice Date Invoice Amount ERRORLIMIT 10 TO SCREEN
Table: Trans

0 data validity errors detected