



Statistics Command

(Numeric and Date Fields)

Used For

- To identify characteristics in client data files to better understand the data being audited.
- To identify unusual characteristics in numeric and date fields for the entire table or for fields that meet certain conditions.

When Used

Typically used immediately after the Verify, Count, and Total commands to identify such things as positive and negative totals and averages in a table, a designated number of the largest and smallest values, and the date bounds in a table.

Examples

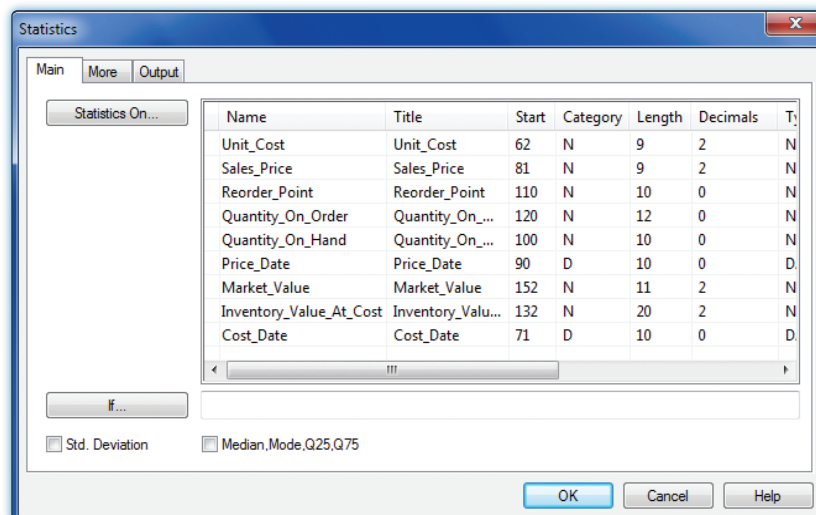
- Calculate the average number of days outstanding in an accounts receivable table.
- Calculate the average outstanding balance for customers in the 61–90 day category in an accounts receivable table.
- Identify the most and least current dates in a sales transaction table.

TASK # 1 — Generate Statistics for a Numeric or Date Field

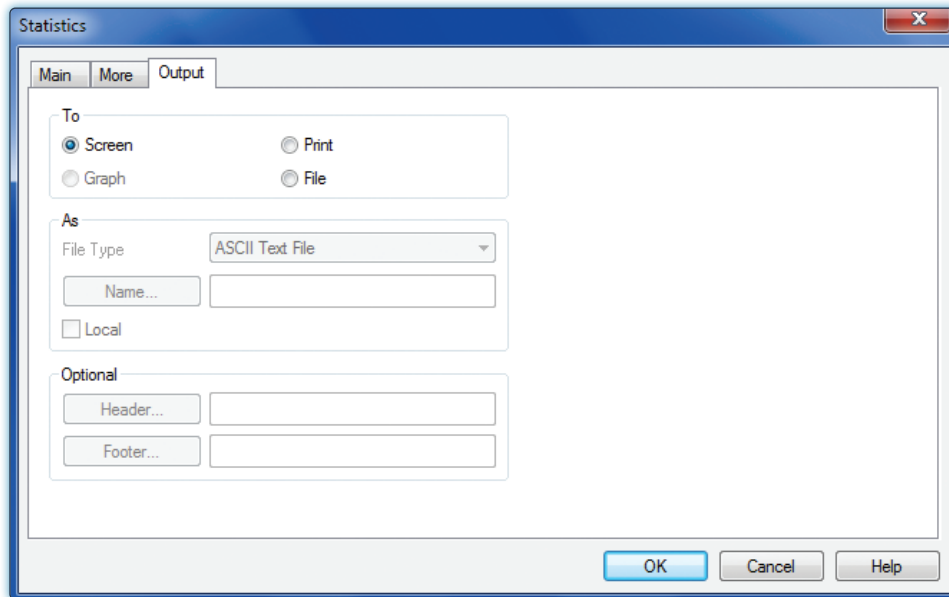
Steps



Click *Analyze* → *Statistics* to open the *Statistics command dialog*. (See the illustration that follows.)



- Select the numeric or date field(s) you want to generate statistics on by clicking on the line(s) containing the field name(s). Use the Shift or Control key to select more than one field.
- Use the More tab to request a different number of high/low transactions than the default of five.



- Click OK to run the command.

Command Results

An example of command results for a Statistics command follows.

As of: 02/16/2017 13:08:09
 Command: [STATISTICS ON Unit Cost TO SCREEN](#)
 Table: Inventory

Unit_Cost

	Number	Total	Average
Range	-	388.07	-
Positive	149	2,642.35	17.73
Neqative	3	-16.88	-5.63
Zeros	0	-	-
Totals	152	2,625.47	17.27
Abs Value	-	2,659.23	-

Highest	Lowest
381.20	-6.87
173.80	-6.80
155.80	-3.21
137.80	0.01
87.40	0.03

Notice that the command results show the following information for the numeric field(s) selected:



- Number of records with positive, negative, and zero values in the field(s) selected.
- Total unit or dollar value of records with positive, negative, and zero values in the field(s) selected.
- Average unit or dollar value of records with positive, negative, and zero values in the field(s) selected.
- The absolute value and range of the unit or dollar value in the field(s) selected.
- The five highest and five lowest values in the field(s) selected (default is five; a different high/low number can be selected).

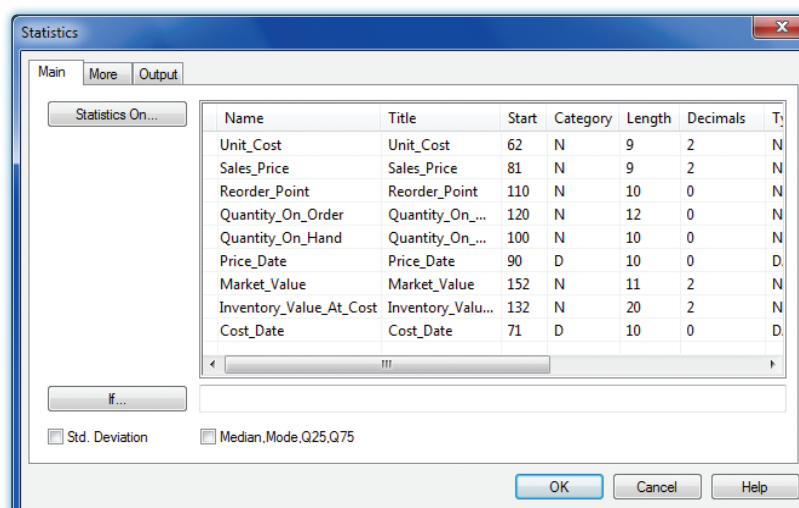
Similar information is shown in the command results for date fields, but the only meaningful calculations are the five highest (most recent) dates, five lowest (oldest) dates, and possibly the average date.


TASK # 2 – Generate Statistics for Numeric or Date Fields that Meet Certain Conditions

The Statistics command can also be used to generate statistical calculations for records that meet certain criteria.

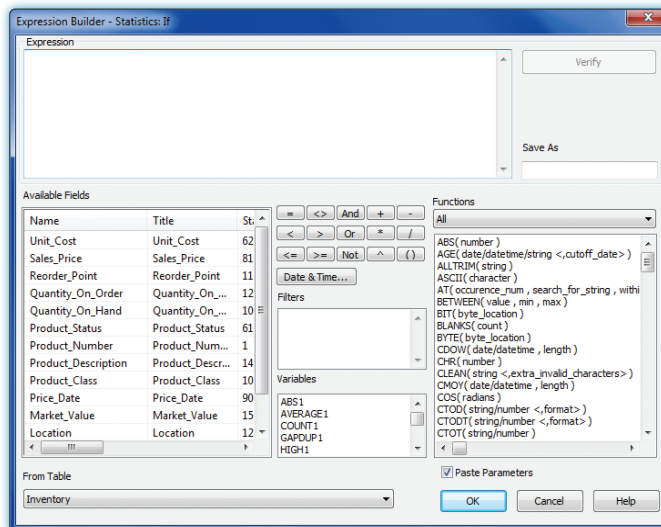
Steps

  Click Analyze → Statistics to open the Statistics command dialog.



 Select the numeric or date field(s) you want to generate statistics on by clicking on the line containing the field name(s). Note: Use the Shift and/or Control key to select more than one field.

Click the If button.



- Build the filter in the Expression box. For guidance using the Expression box, see the Filters section of the Reference material.
- Use the More tab to request a different number of high/low transactions than the default of five.
- Click OK to run the command.

Command Results

The command results show the same information for a conditional Statistics command as the results for a general Statistics command, except that the information is only for the records specified in the filter. The following is an example of command results for a conditional statistics command.

As of: 02/16/2017 13:12:52
Command: STATISTICS ON Unit_Cost IF Location="03" TO SCREEN
Table: Inventory
Condition: Location="03" (37 records matched)

Unit_Cost

	Number	Total	Average
Range	-	380.47	-
Positive	37	1,026.97	27.76
Negative	0	0.00	0.00
Zeros	0	-	-
Totals	37	1,026.97	27.76
Abs Value	-	1,026.97	-

Highest	Lowest
381.20	0.73
62.00	1.22
59.60	1.47
52.80	2.48
49.60	3.90