

Sequence Command

(Numeric, Character, and Date Fields)

Used For

- To determine if key fields in a table are in sequential order. Note: ACL does not consider gaps or duplicates to be sequence errors. See the Reference material for the Duplicates and Gaps commands.
- To determine sequential order for tables that will be joined with other tables. (See the Join Command Reference material).


When Used

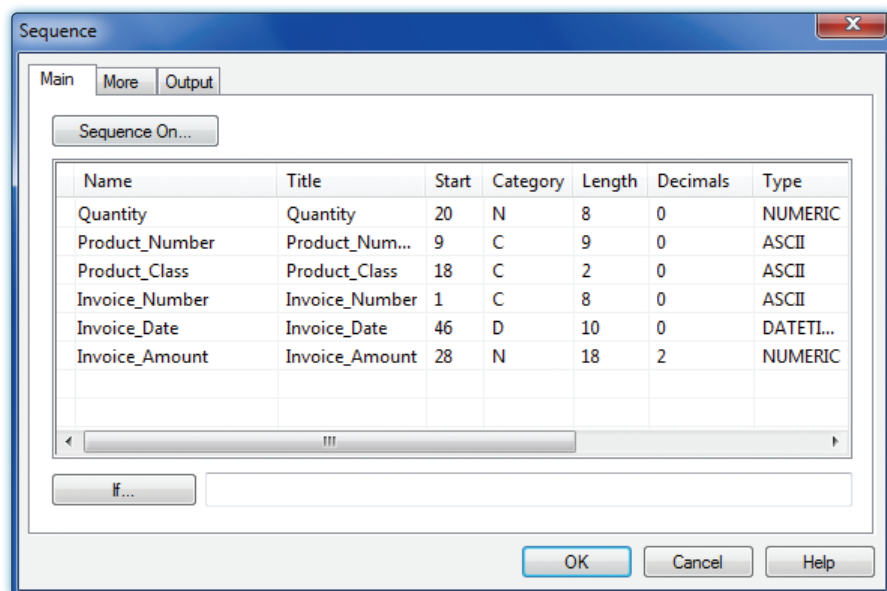
Whenever the auditor is concerned that there are gaps in a sequence of numbers, usually document numbers.

Examples

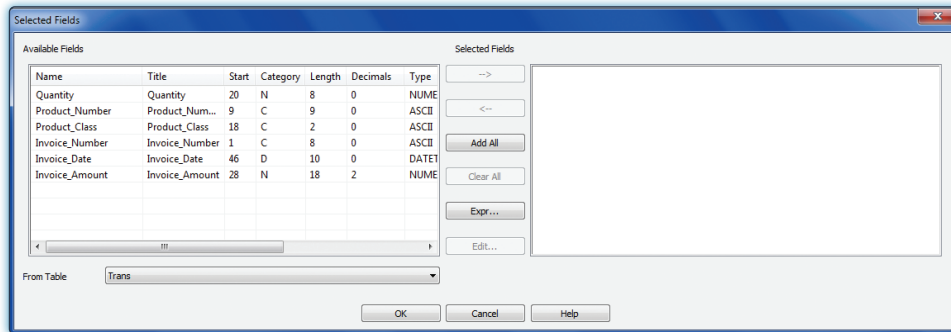
- Identify exceptions to the sequence of invoice numbers in a sales file.
- Identify exceptions to the sequence of check numbers in a payroll transactions file.

Steps

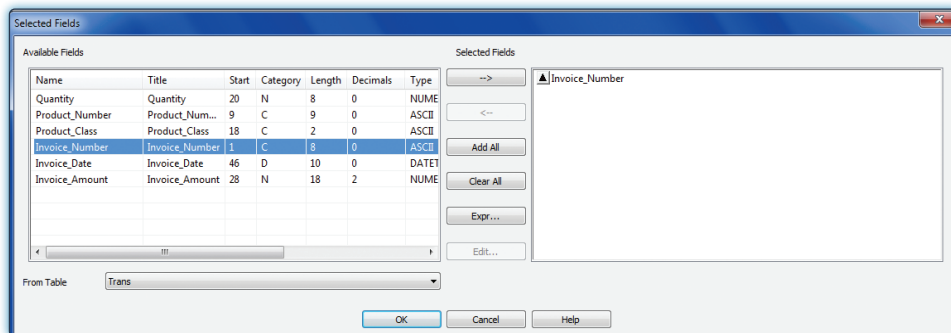
-  Click *Analyze* → *Sequence* to open the *Sequence* command dialog. Each field in the current table is listed in the *Sequence* command dialog.



- Click the **Sequence On** button. The **Selected Fields** window opens and a list of fields appears in the **Available Fields** portion of the window.



- Double-click on the name of the field(s) on which you want to run the **Sequence** command. Make sure they are in the **Selected Fields** box. To select all fields, click the **Add All** button.



After a field is selected, the name of the field is inserted into the **Selected Fields** portion of the window, along with an upward pointing arrow. The default for the **Sequence** command is to test the sequence in ascending order. To change to descending order, click the upward arrow and it changes to a downward arrow. The sequence is then checked in descending order.

- If necessary, change the sequence order to descending.
- Click **OK** to return to the **Main** tab of the **Sequence** command dialog.

The default number of sequence errors reported by ACL is ten. To change the number, complete the following steps:

- Click the **More** tab and change the number in the **error limit** box to the number of sequence errors you want reported. If you want to know all sequence errors in the entire table, use the total number of records in the table.
- Click **OK** to run the command.

SEQUENCE COMMAND

Command Results

The command results show the number of sequence errors found, up to the error limit chosen (default is ten). ACL lists the record number and key field for each sequence error reported. Following is an illustration of Sequence command results.

As of: 02/16/2017 12:26:55
Command: SEQUENCE ON Invoice Number ERRORLIMIT 10 TO SCREEN
Table: Trans

5 sequence errors detected

Sequence:

Record Number	Invoice_Number
32	12893
69	12930
132	12993
229	13093
330	13193